

PERFORMANCE

Processor

AMD Ryzen™ 5 5625U (6C / 12T, 2.3 / 4.3GHz, 3MB L2 / 16MB L3)

Graphics

Integrated AMD Radeon™ Graphics

Chipset

AMD SoC Platform

Memory

8GB Soldered DDR4-3200

Memory Slots

One memory soldered to systemboard, one DDR4 SO-DIMM slot, dual-channel capable

Max Memory^[1]

Up to 16GB (8GB soldered + 8GB SO-DIMM) DDR4-3200 offering

Storage

512GB SSD M.2 2280 PCIe® 3.0x4 NVMe®

Storage Support^[2]

Models with 38Wh battery: up to two drives, 1x 2.5" HDD + 1x M.2 SSD

- 2.5" HDD up to 1TB
- M.2 2242 SSD up to 1TB
- M.2 2280 SSD up to 1TB

Storage Slot

Models with 38Wh battery: one 2.5" drive slot + one M.2 slot

- One 2.5" SATA HDD slot
- One M.2 2280 PCIe 3.0 x4 slot

Card Reader

SD Card Reader

Optical

None

Audio Chip

High Definition (HD) Audio

Speakers

Stereo speakers, 1.5W x2, Dolby® Audio™

Camera

HD 720p with Privacy Shutter

Microphone

2x, Array

Battery

Integrated 38Wh

Power Adapter

65W Round Tip (3-pin)

DESIGN

Display

14" FHD (1920x1080) TN 250nits Anti-glare

Touchscreen

None

Keyboard

Backlit, English

Case Color

Abyss Blue

Surface Treatment

IMR (In-Mold Decoration by Roller)

Case Material

PC-ABS (Top), PC-ABS (Bottom)

Dimensions (WxDxH)^[3]

324.2 x 215.7 x 19.9 mm (12.76 x 8.49 x 0.78 inches)

Weight^[4]

Starting at 1.43 kg (3.15 lbs)

SOFTWARE

Operating System

Windows® 11 Home Single Language, English

Bundled Software

Office Home & Student 2021

CONNECTIVITY

Ethernet

No Onboard Ethernet

WLAN + Bluetooth®

11ac 2x2 + BT5.0

Standard Ports

- 1x Card reader
- 1x HDMI® 1.4b
- 1x Headphone / microphone combo jack (3.5mm)
- 1x Power connector
- 1x USB 2.0
- 1x USB 3.2 Gen 1
- 1x USB-C® 3.2 Gen 1 (support data transfer, Power Delivery and DisplayPort™ 1.2)

SECURITY & PRIVACY

Security Chip

Firmware TPM 2.0 Enabled

Fingerprint Reader

None

Other Security

Camera privacy shutter

SERVICE

Base Warranty

1-year, Courier or Carry-in

Included Upgrade

2Y Premium Care -IPENTRY (ESS)

CERTIFICATIONS

Green Certifications

- ENERGY STAR® 8.0
- ErP Lot 3
- RoHS compliant

MODEL

TopSeller : No

Announce Date : 2022-03-19

EAN / UPC / JAN : 196379803172

End of Support : 2028-04-14



Product image is a sample, it may not match the real color of this model
Note:

[1] The max memory is based on the test results with current Lenovo memory offerings.

[2] The storage capacity supported is based on the test results with current Lenovo storage offerings.

[3] The system dimensions may vary depending on configurations.

[4] The system weight is approximate and based on results in Lenovo lab, which varies depending on the source of component, variance of the distribution of each component, and manufacturing process. It may not be the exact weight for each specific model.

· Lenovo reserves the right to change specifications without notice.

To see more note information, please link to <https://psref.lenovo.com/Detail/1912?M=82RM001TID>

Premium Care - Advanced Support from Real People. Real Fast.



REAL PERSON

Choose how you want to reach us - through the phone, chat or email - our expert technicians will take care of you.



REAL FAST

Highly trained technicians will provide you real-time solutions, whatever the issue, on your first contact. If needed, our team will schedule an onsite visit for the next business day.



HASSLE FREE

'Getting started' and 'how-to' assistance for hardware and software. Easy solutions that are simple to reach - that's how Premium Care delivers you the ideal support experience.



PC HEALTH CHECK

Free annual PC Health Check that allows our experts to spot issues before you do so they can resolve them quickly and help you avoid PC problems.

Accidental Damage Protection - Protection of your PC from the unexpected.

Experience shows that a significant portion of devices may be damaged (and not covered under warranty) in the first three years. Lenovo's Accidental Damage Protection service covers accidents beyond the system warranty such as drops, spills, bumps and even electrical surges. Make sure your new device has maximum protection, avoid unplanned costs and get peace of mind.

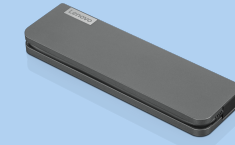
Base Warranty – Included with the systems you purchase, default 1- or 3-year coverage window.

Warranty Extensions & Upgrades – Service and protection that's right for your circumstances.

- Pick Up & Return Courier
- Onsite Support
- Technician Installed Customer
- Replaceable Unit Service
- International Warranty Upgrade

Lenovo may not offer the products, services or features discussed in this document in all regions. Lenovo may withdraw an offering at any time. Consult your local representative for information on offerings available in your area. Lenovo reserves the right to change specifications or other product information without notice. Lenovo is not responsible for photographic or typographical errors. Lenovo provides this publication "as is" without warranty of any kind, either express or implied, including the implied warranties of merchantability or fitness for a particular purpose.

Recommended Accessories



Lenovo USB-C Mini Dock_US

40AU0065US

Expand Your Potential with An Universal Mini Dock; Lenovo understands that modern business depends on a wide variety of PC's and even brands to meet their business needs. To make this easier Lenovo USB-C Mini dock is ...



ThinkPad UltraSlim USB DVD Burner

4XA0E9775

ThinkPad UltraSlim USB DVD Burner -- is a small form factor external portable DVD and CD recordable drive that can be attached to Notebooks with USB2.0 port or USB3.0 port. With 9.5mm UltraSlim engine, 20% slimmer tha...

For a full list of accessories and services, please visit:
<https://smartfind.Lenovo.com>

Lenovo

PSREF
Product Specifications
Reference