

## PERFORMANCE

### Processor

AMD Ryzen™ 5 7530U (6C / 12T, 2.0 / 4.5GHz, 3MB L2 / 16MB L3)

### Graphics

Integrated AMD Radeon™ Graphics

### Chipset

AMD SoC Platform

### Memory

16GB Soldered DDR4-3200

### Memory Slots

Memory soldered to systemboard, no slots, dual-channel (16GB models)

### Max Memory

16GB soldered memory, not upgradable

### Storage

512GB SSD M.2 2242 PCIe® 4.0x4 NVMe®

### Storage Support<sup>[1]</sup>

One drive, up to 1TB M.2 2242 SSD

### Storage Slot

One M.2 2280 PCIe 3.0 x4 slot

### Card Reader

microSD Card Reader

### Optical

None

### Audio Chip

High Definition (HD) Audio

### Speakers

Stereo speakers, 2W x2, optimized with Dolby® Audio™

### Camera

FHD 1080p + IR with Privacy Shutter, ToF Sensor

### Microphone

2x, Array

### Battery<sup>[2]</sup>

Integrated 56.6Wh

### Power Adapter

65W USB-C® (3-pin)

## DESIGN

### Display<sup>[3]</sup>

14" WUXGA (1920x1200) IPS 300nits Anti-glare, 45% NTSC, TÜV Low Blue Light

### Touchscreen

None

### Keyboard

Backlit, English

### Case Color

Violet

### Surface Treatment

Aluminium Stamping (Anodized with Sandblasting)

### Case Material

Aluminium (Top), Aluminium (Bottom)

### Dimensions (WxDxH)<sup>[4]</sup>

312 x 221 x 16.9 mm (12.28 x 8.7 x 0.67 inches)

### Weight<sup>[5]</sup>

Starting at 1.46 kg (3.22 lbs)

## SOFTWARE

### Operating System

Windows® 11 Home Single Language, English

### Bundled Software

Office Home & Student 2021

## CONNECTIVITY

### Ethernet

No Onboard Ethernet

### WLAN + Bluetooth<sup>[6][7]</sup>

Wi-Fi® 6E, 11ax 2x2 + BT5.1

### Standard Ports

- 1x HDMI® 1.4b
- 1x Headphone / microphone combo jack (3.5mm)
- 1x USB 3.2 Gen 1
- 1x USB 3.2 Gen 1 (Always On)
- 1x microSD card reader
- 2x USB-C 3.2 Gen 1 (support data transfer, Power Delivery 3.0 and DisplayPort™ 1.4)

### Docking

Various docking solutions are supported via USB-C. For more compatible docking solutions, please visit [Docking for IdeaPad® Slim 5 14ABR8](#)

### Monitor Cable

None

## SECURITY & PRIVACY

### Security Chip

Firmware TPM 2.0 Enabled

### Fingerprint Reader

None

### Other Security

- Camera privacy shutter
- IR camera for Windows® Hello

## SERVICE

### Base Warranty

1-year, Courier or Carry-in

### Included Upgrade

2Y ADP - IPMAIN (ESS), 2Y Premium Care -IPMAIN (ESS)

## ACCESSORIES

### Bundled Accessories

None

## CERTIFICATIONS

### Green Certifications<sup>[8]</sup>

- ENERGY STAR® 8.0
- EPEAT™ Gold Registered
- ErP Lot 26
- ErP Lot 6
- RoHS compliant

### Other Certifications

- TÜV Rheinland® Low Blue Light (Software Solution)
- TÜV Rheinland Flicker Free

### Mil-Spec Test

MIL-STD-810H military test passed (20 test items)

## MODEL

**TopSeller** : No **Announce Date** : 2023-04-06

**EAN / UPC / JAN** : 197529936962 **End of Support** : 2029-04-06

Note:

<sup>[1]</sup> The storage capacity supported is based on the test results with current Lenovo storage offerings.

<sup>[2]</sup> Rapid Charge Boost is only effective in hibernates or fully shutting down the computer.

<sup>[3]</sup> IPS (in-plane switching) technology may refer to IPS, PLS, ADS, AHVA, AAS.

<sup>[4]</sup> The system dimensions may vary depending on configurations.

<sup>[5]</sup> The system weight is approximate and based on results in Lenovo lab, which varies depending on the source of component, variance of the distribution of each component, and manufacturing process. It may not be the exact weight for each specific model.

<sup>[6]</sup> Bluetooth 5.2 is hardware ready but may run at a lower version due to OS limitations.

<sup>[7]</sup> Wi-Fi 6E full features might be limited by country-level restrictions.

6GHz Wi-Fi 6E operation is dependent on the support of the operating system, routers/APs/Gateways that support Wi-Fi 6E, and the regional regulatory certifications & spectrum allocation.

<sup>[8]</sup> EPEAT is registered where applicable, please see.....

· Lenovo reserves the right to change specifications without

notice.

To see more note information, please link to

<https://psref.lenovo.com/Detail/2191?M=82XE0061ID>

## Premium Care - Advanced Support from Real People. Real Fast.



### REAL PERSON

Choose how you want to reach us - through the phone, chat or email - our expert technicians will take care of you.



### REAL FAST

Highly trained technicians will provide you real-time solutions, whatever the issue, on your first contact. If needed, our team will schedule an onsite visit for the next business day.



### HASSLE FREE

'Getting started' and 'how-to' assistance for hardware and software. Easy solutions that are simple to reach - that's how Premium Care delivers you the ideal support experience.



### PC HEALTH CHECK

Free annual PC Health Check that allows our experts to spot issues before you do so they can resolve them quickly and help you avoid PC problems.

## Accidental Damage Protection - Protection of your PC from the unexpected.

Experience shows that a significant portion of devices may be damaged (and not covered under warranty) in the first three years. Lenovo's Accidental Damage Protection service covers accidents beyond the system warranty such as drops, spills, bumps and even electrical surges. Make sure your new device has maximum protection, avoid unplanned costs and get peace of mind.

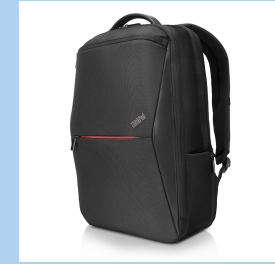
## Base Warranty – Included with the systems you purchase, default 1- or 3-year coverage window.

## Warranty Extensions & Upgrades – Service and protection that's right for your circumstances.

- Pick Up & Return Courier
- Onsite Support
- Technician Installed Customer
- Replaceable Unit Service
- International Warranty Upgrade

Lenovo may not offer the products, services or features discussed in this document in all regions. Lenovo may withdraw an offering at any time. Consult your local representative for information on offerings available in your area. Lenovo reserves the right to change specifications or other product information without notice. Lenovo is not responsible for photographic or typographical errors. Lenovo provides this publication "as is" without warranty of any kind, either express or implied, including the implied warranties of merchantability or fitness for a particular purpose.

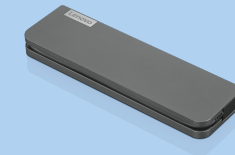
## Recommended Accessories



### ThinkPad Professional 15.6-inch Backpack

4X40Q26383

The Lenovo ThinkPad Professional Backpack is a streamlined yet versatile backpack for the on-the-go professional. This clean, modern design carries, protects, and organizes your mobile office, while premium, lightweight...



### Lenovo USB-C Mini Dock\_US

40AU0065US

Expand Your Potential with An Universal Mini Dock; Lenovo understands that modern business depends on a wide variety of PC's and even brands to meet their business needs. To make this easier Lenovo USB-C Mini dock is ...

For a full list of accessories and services, please visit:  
<https://smartfind.Lenovo.com>

Lenovo

PSREF  
Product Specifications  
Reference