

## PERFORMANCE

### Processor

AMD Ryzen™ 7 6800HS Creator Edition (8C / 16T, 3.2 / 4.7GHz, 4MB L2 / 16MB L3)

### Graphics

NVIDIA® GeForce RTX™ 3050 4GB GDDR6

### Chipset

AMD SoC Platform

### Memory

32GB Soldered LPDDR5-6400

### Memory Slots

Memory soldered to systemboard, no slots, dual-channel

### Max Memory

32GB soldered memory, not upgradable

### Storage

1TB SSD M.2 2280 PCIe® 4.0x4 NVMe®

### Storage Support<sup>[1]</sup>

One drive, up to 1TB M.2 2280 SSD

### Storage Slot

One M.2 2280 PCIe 4.0 x4 slot

### Card Reader

None

### Optical

None

### Audio Chip

High Definition (HD) Audio, Realtek® ALC3287 codec

### Speakers

Stereo speakers, 2W x2, optimized with Dolby® Atmos®, audio by Harman

### Camera

FHD 1080p + IR with E-shutter, ToF Sensor

### Microphone

2x, Array

### Battery<sup>[2]</sup>

Integrated 70Wh

### Power Adapter

100W USB-C® Slim (3-pin)

## DESIGN

### Display<sup>[3]</sup>

14.5" 3K (3072x1920) IPS 400nits Glossy, 100% sRGB, 120Hz, Eyesafe®, Glass, Touch, Dolby Vision™

### Touchscreen

OGM, 10-point Multi-touch

### Color Calibration

Factory Color Calibration

### Keyboard

Backlit, English

### Case Color

Onyx Grey

### Surface Treatment

Aluminium CNC (Top, Keyboard Cover), Aluminium Stamping (Bottom)

### Case Material

Aluminium (Top), Aluminium (Bottom)

### Dimensions (WxDxH)<sup>[4]</sup>

328.2 x 221.4 x 15.9 mm (12.92 x 8.72 x 0.63 inches)

### Weight<sup>[5]</sup>

Starting at 1.45 kg (3.20 lbs)

## SOFTWARE

### Operating System

Windows® 11 Home Single Language, English

### Bundled Software

Office Home & Student 2021

## CONNECTIVITY

### Ethernet

No Onboard Ethernet

### WLAN + Bluetooth<sup>[6][7]</sup>

Wi-Fi® 6E, 11ax 2x2 + BT5.1

### Standard Ports

- 1x Headphone / microphone combo jack (3.5mm)
- 1x USB 3.2 Gen 1
- 1x USB 3.2 Gen 1 (Always On)
- 2x USB-C 3.2 Gen 2 (support data transfer, Power Delivery 3.0 and DisplayPort™ 1.4)

### Docking

Various docking solutions are supported via USB-C. For more compatible docking solutions, please visit [Docking for Yoga® Slim 7 ProX 14ARH7](#)

## SECURITY & PRIVACY

### Security Chip

Firmware TPM 2.0

### Fingerprint Reader

None

### Other Security

- IR camera for Windows Hello
- E-shutter

## SERVICE

### Base Warranty

1-year, Courier or Carry-in

### Included Upgrade

2Y ADP - IPPREM (ESS), 3Y Premium Care -IPPREM (ESS)

## ACCESSORIES

### Bundled Accessories

None

## CERTIFICATIONS

### Green Certifications<sup>[8]</sup>

- ENERGY STAR® 8.0
- EPEAT™ Silver Registered
- ErP Lot 26
- ErP Lot 6
- RoHS compliant

### Other Certifications

- Eyesafe® Certified
- TÜV Rheinland® Low Blue Light (Hardware Solution)

## MODEL

TopSeller : No

Announce Date : 2022-05-26

EAN / UPC / JAN : 196380133640

End of Support : 2028-06-09



Product image is a sample, it may not match the real color of this model

Note:

<sup>[1]</sup> The storage capacity supported is based on the test results with current Lenovo storage offerings.

<sup>[2]</sup> Rapid Charge Express is only effective in hibernates or.....

· Lenovo reserves the right to change specifications without notice.

To see more note information, please link to <https://psref.lenovo.com/Detail/1958?M=82TL000JID>

## Premium Care - Advanced Support from Real People. Real Fast.



### REAL PERSON

Choose how you want to reach us - through the phone, chat or email - our expert technicians will take care of you.



### REAL FAST

Highly trained technicians will provide you real-time solutions, whatever the issue, on your first contact. If needed, our team will schedule an onsite visit for the next business day.



### HASSLE FREE

'Getting started' and 'how-to' assistance for hardware and software. Easy solutions that are simple to reach - that's how Premium Care delivers you the ideal support experience.



### PC HEALTH CHECK

Free annual PC Health Check that allows our experts to spot issues before you do so they can resolve them quickly and help you avoid PC problems.

## Accidental Damage Protection - Protection of your PC from the unexpected.

Experience shows that a significant portion of devices may be damaged (and not covered under warranty) in the first three years. Lenovo's Accidental Damage Protection service covers accidents beyond the system warranty such as drops, spills, bumps and even electrical surges. Make sure your new device has maximum protection, avoid unplanned costs and get peace of mind.

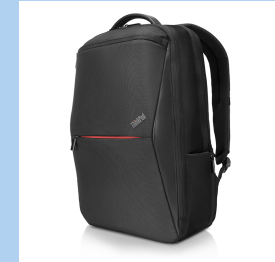
## Base Warranty – Included with the systems you purchase, default 1- or 3-year coverage window.

## Warranty Extensions & Upgrades – Service and protection that's right for your circumstances.

- Pick Up & Return Courier
- Onsite Support
- Technician Installed Customer
- Replaceable Unit Service
- International Warranty Upgrade

Lenovo may not offer the products, services or features discussed in this document in all regions. Lenovo may withdraw an offering at any time. Consult your local representative for information on offerings available in your area. Lenovo reserves the right to change specifications or other product information without notice. Lenovo is not responsible for photographic or typographical errors. Lenovo provides this publication "as is" without warranty of any kind, either express or implied, including the implied warranties of merchantability or fitness for a particular purpose.

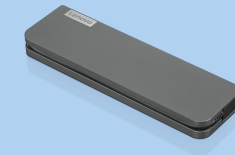
## Recommended Accessories



### ThinkPad Professional 15.6-inch Backpack

4X40Q26383

The Lenovo ThinkPad Professional Backpack is a streamlined yet versatile backpack for the on-the-go professional. This clean, modern design carries, protects, and organizes your mobile office, while premium, lightweight...



### Lenovo USB-C Mini Dock\_US

40AU0065US

Expand Your Potential with An Universal Mini Dock; Lenovo understands that modern business depends on a wide variety of PC's and even brands to meet their business needs. To make this easier Lenovo USB-C Mini dock is ...

For a full list of accessories and services, please visit:  
<https://smartfind.Lenovo.com>

Lenovo

PSREF  
Product Specifications  
Reference