

# SOLUSI TEPAT UNTUK MEMBUAT LABEL



P-touch LABELS  
TESTED  
TO THE EXTREME ✓



Chemical Resistant



Temperature Resistant



Fade Resistant



Abrasion Resistant



Water Resistant



Strong Adhesion





Personal Use



Office Use



Telecommunication Use



Electrical Use



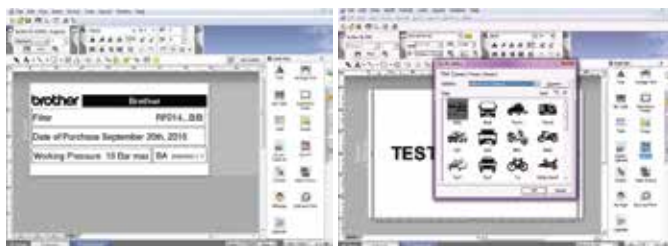
Logistic Use



Business Use

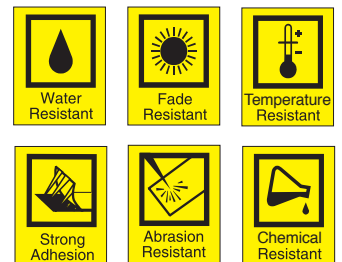


## P-Touch Editor

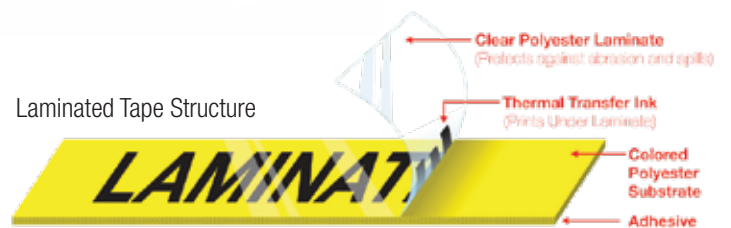


Software P-Touch Editor menawarkan berbagai macam pilihan desain & fungsi untuk mengakomodir kebutuhan bisnis & pelabelan anda. Dengan menggunakan P-Touch Editor, Anda dapat membuat berbagai teks, gambar, label barcode atau label lainnya, baik single atau multiple label. Software ini dapat dihubungkan dengan database M.S Excel. Tersedia untuk Windows dan Macintosh

## Laminated "TZe" Tape Construction



Laminated Tape Structure



**Brother Service Center**  
0811-82-555-95 (home user)  
0811-80-555-95 (corporate)



**Jaminan Garansi Resmi 3 Tahun**  
dari Brother Indonesia

# INDUSTRIAL TUBE & LABEL PRINTER

## Introducing Brother's PT-E800T and PT-E850TKW

Get the job done in no time with these robust industrial tube printers.



### Twin Engines

Meet the first industrial printers with twin engines. With just one machine, you can print on tubes, labels of up to 36mm and other applications; including warning signs and tags.



### Zero Fuss

Switch between tube and label printing without replacing or reinserting supplies. Need to replace worn-out parts? You can do it yourself in a few quick steps. It's that easy.



### Perfectly Portable

Get the printer working wherever, whenever with the rechargeable Li-ion battery\* and wireless capability.



**TUBE AND LABEL PRINTER  
IN ONE MACHINE**



**PT-E800T**

**PT-E850TKW**

	PT-E800T	PT-E850TKW
<b>TUBE</b>		
Compatible Tube Diameter	2,5 - 6,5mm	
Supported Tube Type	PVC	
Max Print Height for Tube	6mm	
Tube Print Speed	40mm/sec	
Multi Line Printing for Tube	-	Up to 2 lines
<b>CONSUMABLES</b>		
Tape Type	TZe*, TR-100BK, HSe (Heat Shrink Tube)	
Max. Tape Width	Up to 36mm*	
<b>GENERAL</b>		
Label Print Resolution	360dpi*	
Label Print Speed	60mm/sec*	
Cutter	Auto and half cutter*	
Multi Line Printing for Label	Customize (P-touch Editor)*	Up to 17 lines*
Label Collection	-	Available in Brother iPrint & Label (Mobile App)*
Multi Line Printing for Label	-	Yes*
Machine Dimensions (WxDxH) mm	338 x 188 x 151	338 x 188 x 151 338 x 188 x 173 (with Keyboard)
Interface	USB	USB / Wi-Fi
Host Device	PC	Machine Keyboard / PC / Mobile Device
Numbering Function	Normal / Octal / Hexadecimal / Alphabet	
Barcode Printing	Yes*	
Items (Include in the box)	36mm Black on White 8mm tape (TZe-261) 100mm Black Ink ribbon (TR-100BK) AC Adapter (AD9100ESA)	

\*using TZe Tapes

## HOME AND OFFICE LABEL PRINTER



**M**  
TAPE  
Up to 12 mm



**TZe**  
TAPE  
Up to 12 mm

### PT-M95

### PT-H110

Types of Tape	M-Tape Non-Laminated	TZe Laminated Tape
Tape Size (Max width)	12mm	
Print Speed	7,5mm/sec	20mm/sec
Print Resolution	203dpi	180dpi
Power Source	4 x AAA Alkaline Batteries	6 x AAA Alkaline Batteries
PC Connectivity	No	
Interface	Standalone	
Barcode Printing	No	

### Recommended for :

- 1 Personal
- 2 Office
- 3 Asset Management



## PROFESSIONAL LABEL PRINTER FOR CORPORATION



**brother**  
Ptouch Design&Print 2  
Mobile Apps  
**TZe**  
TAPE  
Up to 18 mm



**brother**  
Ptouch Design&Print 2  
Mobile Apps  
**TZe**  
TAPE  
Up to 24 mm

### PT-D460BT

### PT-D610BT

Types of Tape	Tze Laminated Tape	
Tape Size (Max width)	18mm	24mm
Print Speed	30mm/sec	
Print Resolution	180dpi	
Power Source	AC Power 6 x AAA Alkaline Batteries	
PC Connectivity	Yes	
Interface	Standalone, Bluetooth, USB	
Barcode Printing	Yes	

### Recommended for :

- 1 Manufacturing
- 2 Office
- 3 Asset Management





**TZe**  
TAPE  
Up to 12 mm



Ptouch Design&Print 2  
Mobile Apps

**TZe**  
TAPE  
Up to 12 mm



Ptouch Design&Print 2  
Mobile Apps

**TZe**  
TAPE  
Up to 24 mm

**PT-D210**

**PT-P300BT**

**PT-P710BT**

TZe Laminated Tape

12mm

24mm

20mm/sec

180dpi

6 x AAA Alkaline Batteries, AC Power

6 x AAA Alkaline

Li-ion Battery, USB

No

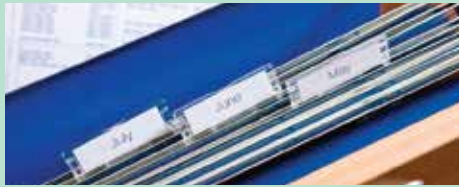
Yes

Standalone

Bluetooth

Bluetooth, USB

No



**TZe**  
TAPE  
Up to 24 mm



**TZe**  
TAPE  
Up to 36 mm



**TZe**  
TAPE  
Up to 36 mm

**PT-P750W**

**PT-P900W**

**PT-P950NW**

Tze Laminated Tape

24mm

36mm

30mm/sec with AC Adapter  
20mm/sec with Battery

Normal mode 60mm/sec, Highres mode 30mm/sec , High Speed mode 80mm/sec

180dpi

720dpi

AC Power  
Li-ion Battery  
6 x AAA Alkaline Batteries

AC Power

Yes (NFC Compatible)

Yes

USB Connection  
Wi-Fi Connection

USB Connection  
RS-232C Interface  
Wi-Fi Connection

USB Connection  
RS-232C Interface  
Ethernet (10BASE-T/100BASE-TX), Wi-Fi

Yes



## PROFESSIONAL LABEL PRINTER FOR BUSINESS



**DK LABEL**  
**DK TAPE**

**QL-800**



**DK LABEL**  
**DK TAPE**

**QL-820NWB**



**DK LABEL**  
**DK TAPE**

**QL-1100**



**DK LABEL**  
**DK TAPE**

**QL-1110NWB**

DK Labels & DK Tape (Non-Laminated)

62mm		103mm	
150mm/sec (Standard Address Label)	176mm/sec	110mm	
300dpi			
AC Power			
Yes			
USB Connection	USB Connection Wi-Fi & Bluetooth Connection Ethernet (10BASE-T/100BASE-TX)	USB Connection	USB Connection Wi-Fi & Bluetooth Connection Ethernet (10BASE-T/100BASE-TX)
Yes			

### Recommended for :

- 1 Retail
- 2 Logistic
- 3 Warehouse



## PROFESSIONAL LABEL PRINTER FOR TELCO AND ELECTRICAL



**TZe TAPE**  
Up to 12 mm

**PT-E110**



**HSe TUBE**  
Up to 18 mm  
**TZe TAPE**  
Up to 18 mm

**PT-E300**



**HSe TUBE**  
Up to 18 mm  
**TZe TAPE**  
Up to 24 mm

**PT-E550W**

Tze Laminated Tape	Tze Laminated Tape / HSe Heat Shrink Tube	
12mm	18mm	24mm
20mm/sec		30mm/sec with AC Adapter 20mm/sec with Battery
180dpi		
AC Power, Li-ion Battery, 6 x AAA Alkaline Batteries		
No	Yes	
Standalone	Standalone USB Connection Wi-Fi Connection	
No	Yes	

### Recommended for :

- 1 Electrical
- 2 Telecommunication
- 3 Data Center

